

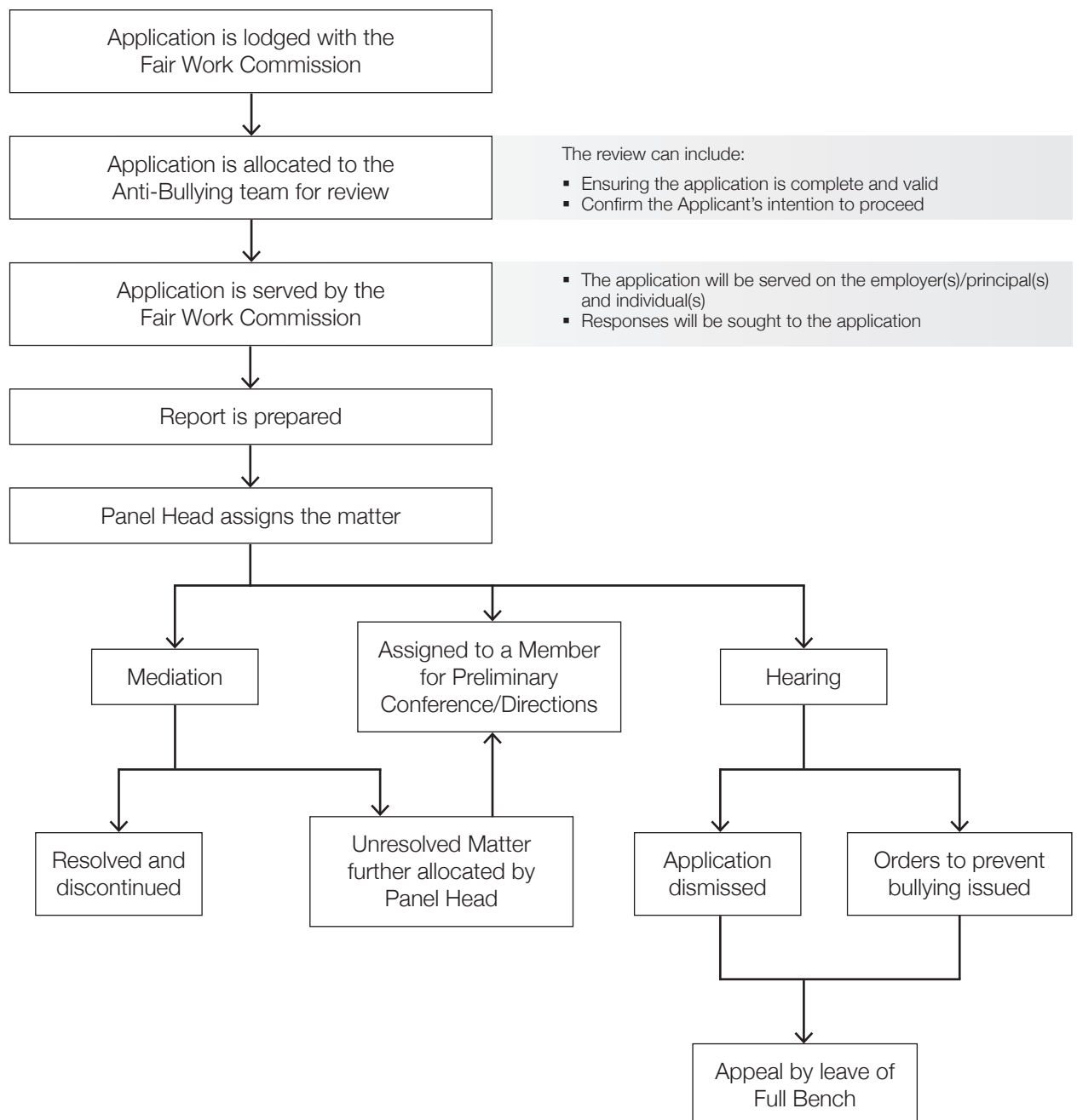


Guide

Flowchart of the anti-bullying process

This flowchart outlines the process followed by the Fair Work Commission in dealing with anti-bullying matters.

The Process



Help is available

If you need further information or help visit the Fair Work Commission's website at www.fwc.gov.au. You should note that legal advice is not available from the Fair Work Commission.

You can also refer to the full Guide—Anti-bullying at the Fair Work Commission.

© Commonwealth of Australia 2013

This guide is not intended to be comprehensive, but is designed to help employers and employees gain an understanding of the Fair Work Commission and its work. The Fair Work Commission does not provide legal advice.